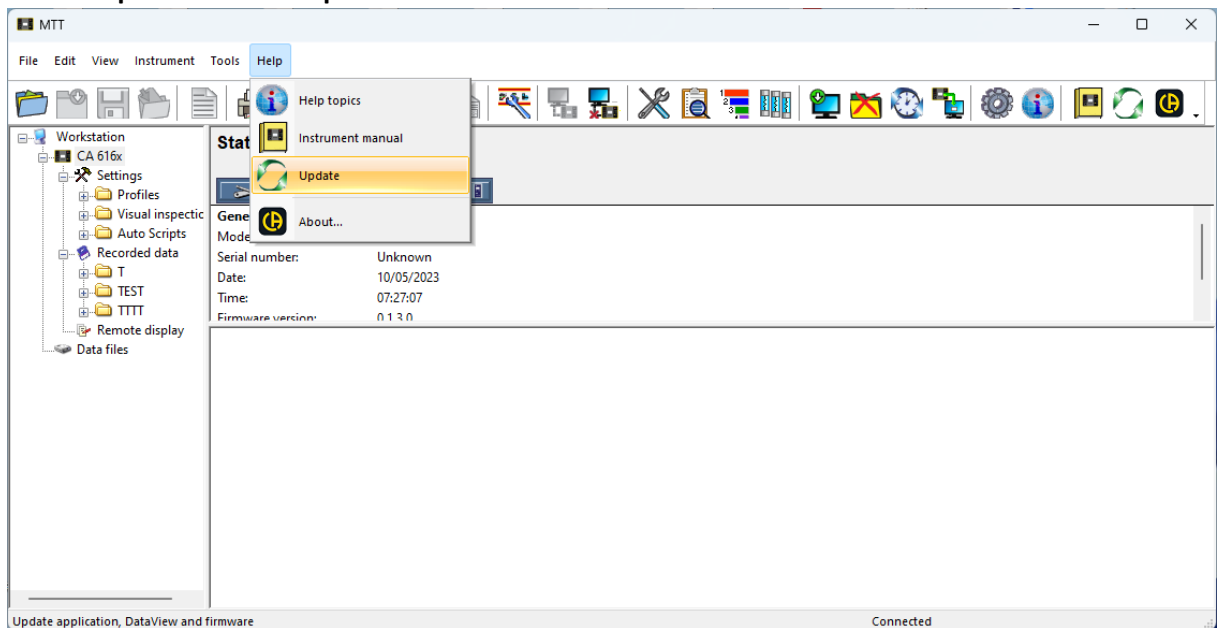


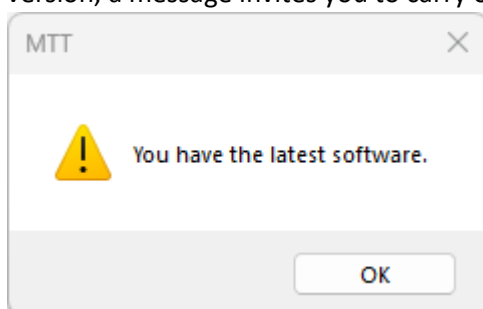
Firmware update of CA 6161 & CA 6163 instruments using MTT

- The file **696268M_fw616x_v0.1.40_UseMTT.zip** allows the firmware update while using the MTT software.

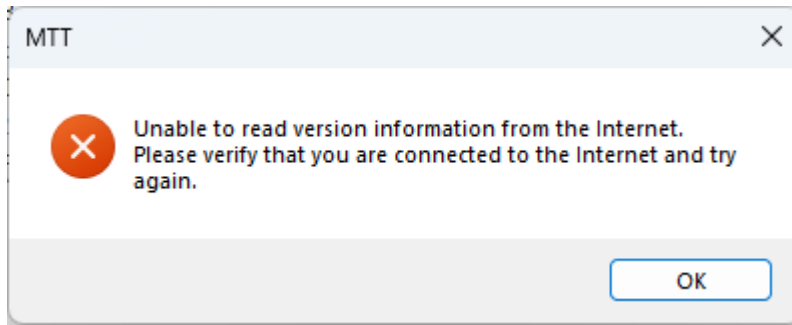
1. Upload this file from the **Support** section, Firmware CA 6161 / CA 6163.
2. Unzip the ZIP file in the chosen directory: you will get a file "**mt-swu-image-ro-dhcom3bimx6smtproto1.swu**" whose name should not be modified.
3. Launch MTT, and connect to the instrument.
4. Select "**Update**" in the **Help** menu.



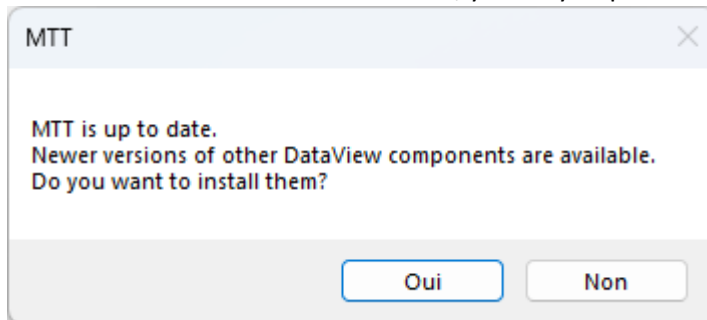
5. If the MTT application and the other applications from the DataView suite are from the latest version, a message invites you to carry on the process by clicking on **OK** :



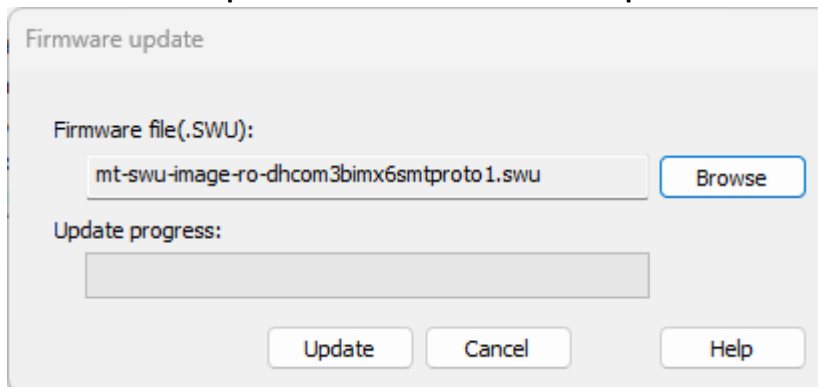
6. If you are no longer connected to internet, a window tells you so. Click on **OK**. This will not prevent you from proceeding with the firmware update of the instrument from the unzip file.



7. If a window indicates that the Control Panel is from the latest version, but that other Control Panels are not from the latest version, you may skip this step by clicking on **“NON”**

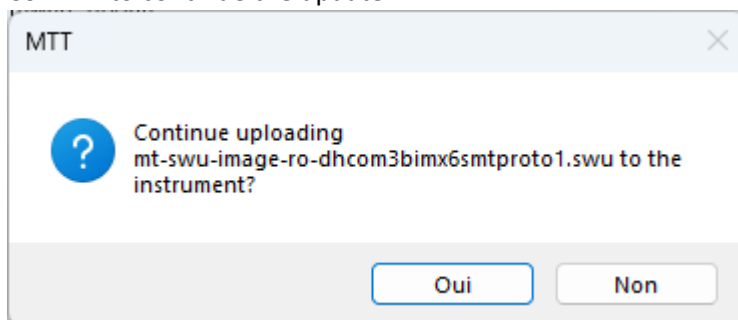


8. In the window **“Firmware update”**, select the file **“mt-swu-image-ro-dhcom3bimx6smtproto1.swu”** and then click on **“Update”**.

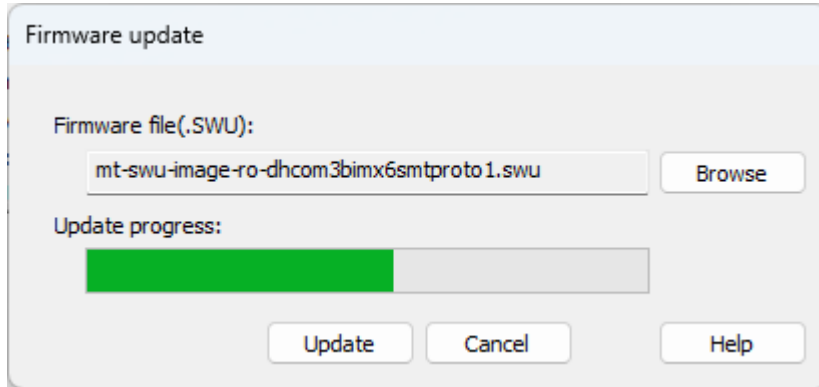


Note: With MTT version 1.3.6 and later, it is no longer necessary to select the file. It is directly imported from an update server.

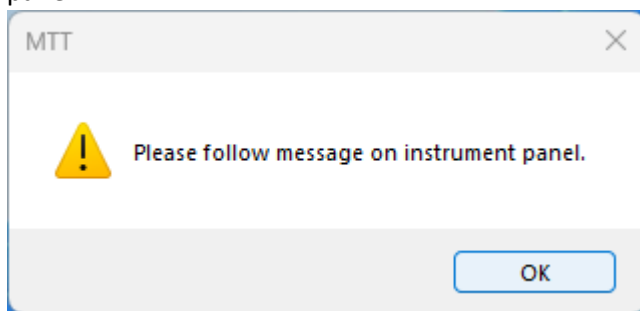
9. Confirm to continue the update



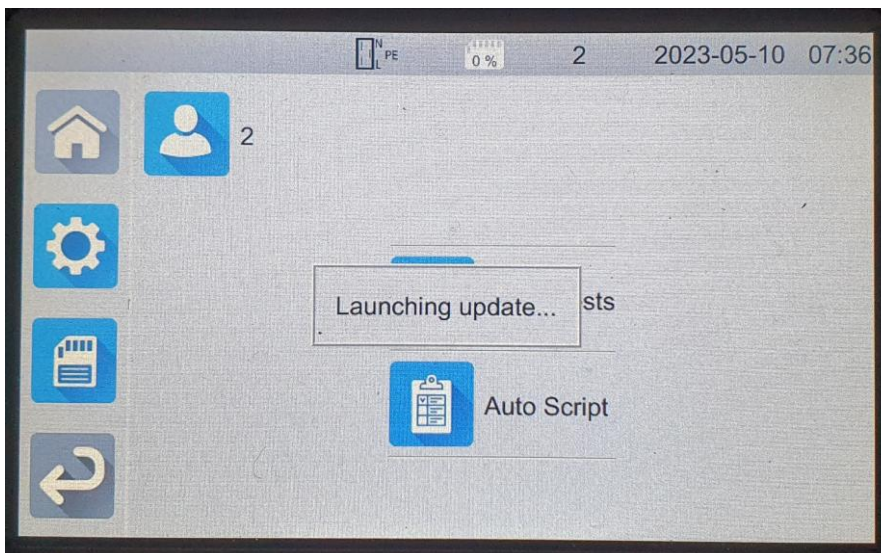
The progress bar shows the file transfer to the instrument:



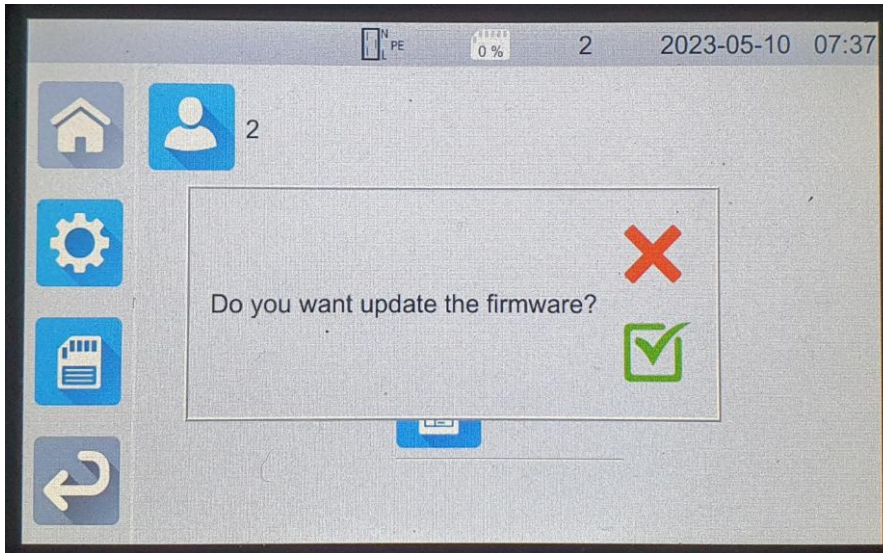
10. When the file is transferred, MTT invites you to read the messages on the instrument's front panel.



11. The display of the instrument shows the beginning of the update.



Validate the update by clicking on the "green tick".



12. Follow the instructions displayed on the front panel of the instrument, which will proceed with two reboots.

Note: the instrument is disconnected from MTT during the update